

fermacell®

Because it's better



Greenline Building Board

It breathes in VOCs so you don't have to

Walls / Ceilings / Flooring / Environmental



A young child with curly hair is looking out a window. The child is wearing a white t-shirt. The window shows a view of the outdoors. In the top right corner, there are three overlapping white squares of different sizes.

fermacell

Protect the things that matter

Greenline is a revolutionary building board manufactured by Fermacell that absorbs and neutralises volatile organic compounds (VOCs) from the air for good. It considerably improves the quality of the air in buildings and constructions and brings us one step closer to the dream of a zero-emissions home.

Greenline is manufactured without compromise to the renowned properties of the Fermacell multi-purpose building board – retaining its superior impact, acoustic and moisture resistant qualities whilst answering the call for an environmentally friendly and sustainable product.

What are VOCs?

VOCs are organic chemicals emitted as gases from certain solids or liquids. Some of these chemicals may have short and long-term adverse health effects.

Concentrations of VOCs are up to ten times higher indoors than outdoors, so affect the workplace, social buildings and the home. This is attributed to the low rates of air exchange between the indoor and outdoor environment as a result of tight shut windows and the increasing use of

air conditioning. VOCs have no colour, smell or taste and are emitted by a vast range of products, such as paints and paint strippers, wood preservatives, aerosol sprays, glues, furniture, laminates, wall coverings, electrical equipment to name but a few.

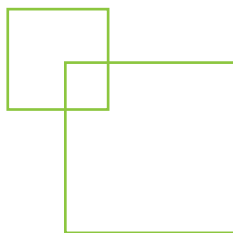
VOCs are also known as aldehydes. Aldehydes such as formaldehyde and ketones can be harmful.

VOCs are unstable, carbon-containing compounds that vaporise into the air and then react with other elements to produce ozone, which causes air pollution and a host of health issues including breathing problems, headaches, burning, watery eyes and nausea. Some VOCs have also been linked to cancer and sick building syndrome.

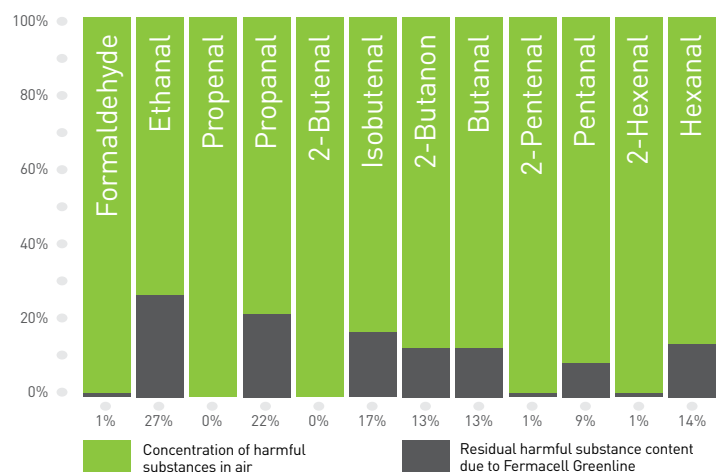
Paint is a good example of an every day product that can contain VOCs.

Although VOC levels are highest during and soon after painting, they continue seeping out for several years.

In fact, only 50 percent of the VOCs may be released in the first year. Paint-related products are the second largest source of VOC emissions into the atmosphere after motor vehicles. New buildings contribute to the highest levels of VOCs.



Measurably less harmful substances through the use of Fermacell Greenline



greenline

Fermacell Greenline – A breath of fresh air

Fermacell has succeeded in combining the purifying effects of sheep's wool with its gypsum fibre board.

Its unique manufacturing technique produces a building board of quality, flexibility and strength and is made completely from recycled materials, making it a totally sustainable product that is ideal for walls, ceilings or floors.

Both the product and the process have been awarded the coveted Rosenheim Institute of Construction Biology and Ecology certificate.

At the end of the board's manufacturing process the panel surfaces are coated with keratin. It possesses properties which embed harmful substances in its molecular structure, so that they become insoluble, and the harmful substances are then neutralised.

The purifying properties of the board remain active and Greenline was tested and certified in a comprehensive study by the independent eco-institute of Cologne.

Range of Products

Fermacell Greenline Boards

1500 x 1000 x 10 mm

1500 x 1000 x 12.5 mm

2600 x 1200 x 12.5 mm

3000 x 1200 x 12.5 mm

Fermacell Greenline

Wood Fibre Acoustic Flooring

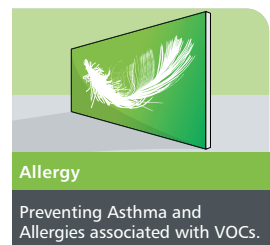
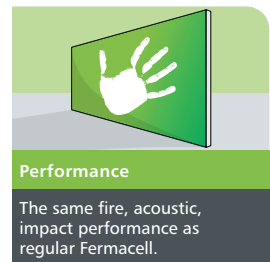
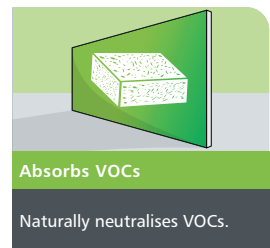
1500 x 1000 x 30 mm

Fermacell Greenline Jointstik

For bonding the board joints

Fermacell Glue

For bonding Greenline flooring



The superior building board

As well as its sustainable properties, the board also has far superior impact, moisture and acoustic qualities than standard plasterboard.

Fire: 60 minute fire resistance from a single layer with insulation

Impact: Severe duty rating from a single layer of Fermacell Greenline

Acoustics: 54 dB from a single layer of board with insulation

Strength: 30kg can be hung from a single screw

Why Fermacell Greenline?

✓ Greenline boards are laminated with keratin, derived from sheep's wool – neutralising harmful VOCs naturally

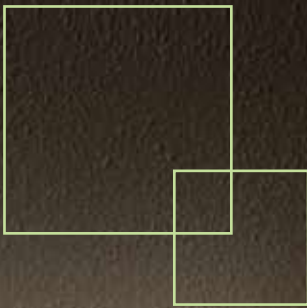
✓ Uses the same simple non plastering finishing system as standard Fermacell

✓ The harmful substances and emissions, including VOCs, are permanently removed from the air in a natural process

✓ A superior BREEAM rating is achieved due to the 99% recycled content of Fermacell Greenline

✓ The purifying properties of Greenline remain active





Health and well-being

Health and well-being are increasingly becoming more important in every day life.

Most people now carefully consider a healthy diet and regular exercise, and are also becoming increasingly more responsible towards their environment.

The demand for sustainable and 'friendly' building materials has risen dramatically in recent years.

Fermacell Greenline answers the call for a fully recyclable building board with the additional properties of absorbing VOCs.

Health

Fermacell's goal is to reach a minimum level of harmful pollutants for everyone and maximum quality of living for millions of allergy sufferers – Greenline delivers this.

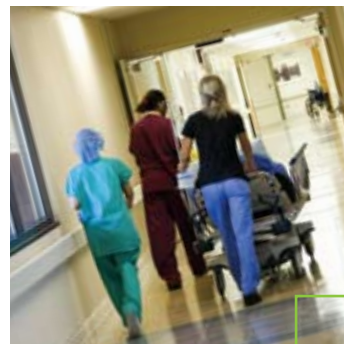


Protection

The properties of Fermacell Greenline's sound insulation ensure an excellent living environment.

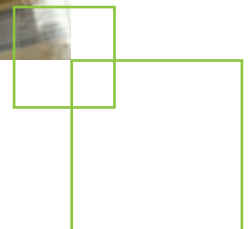
Safety

Fermacell Greenline's moisture and fire resistant qualities offer additional protection for your building and family.



Well-being

The positive aspects of using Fermacell Greenline combine to create the perfect conditions for an improved lifestyle – an investment in quality of life which will really last.



Uncover a healthier way to live...

Physical well-being is a key factor, particularly in protecting ourselves from the negative effects from substances via breathing. It is also important to avoid the indirect effects through living and working spaces, particularly from the air.



Maintaining a healthy workplace

Many employees who are office based complain about headaches or allergic reactions on their skin.

The cause of this is not just bad air – it is also building materials, furniture carpets, work desks, computer monitors, printers and copiers that all give off harmful substances. Fermacell's Greenline can provide relief to the working environment.

The VOC absorbent qualities can make a valuable contribution in reducing the numbers of sick days taken by employees.

Responsibilities with social buildings

As well as the workplace, hospitals, schools and colleges, nursing homes and student accommodation are just a few other examples of buildings that will contain harmful substances.

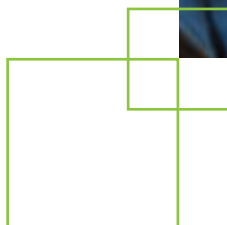
Fermacell Greenline can be particularly useful in tackling the recent phenomenon of sick building syndrome (SBS). It has a range of symptoms, from headaches and dizziness to shortness of breath and loss of concentration.

Office workers are most at risk and it is more likely to occur in buildings with air-conditioning and automated heating and ventilation systems.

No single cause of SBS has yet to be identified, however risk factors include:

- Poor ventilation
- Airborne pollutants
- Chemical pollutants
- Ozone

Poor air in hospitals and waiting rooms is often caused by the evaporation of VOCs from flooring, technical equipment and insulation materials. These harmful substances can trigger hypersensitive reactions. Using Fermacell Greenline to absorb and lock in VOCs will increase well-being and contribute to the improved health of patients.





Fermacell – the choice for sustainable living

At Fermacell we have a heritage in sustainability by producing environmentally friendly products that fulfil the challenges of today's construction methods.

With a rating of A+ (the highest rating possible) Fermacell provides a good opportunity to obtain BREEAM credits.



Fermacell has always aimed to bring the highest levels of environmental care and sustainability to the construction industry.

All of its materials are assessed on various environmental impacts such as climate change, mineral resource extraction and water extraction.

The use of Fermacell or Greenline on a project will help you achieve your BREEAM rating objectives for internal partitions, ceilings and acoustic floors by obtaining a high point yield in the following categories:

- Materials specification
- Responsible sourcing of materials
- Construction site waste management

Fermacell's unique manufacturing technique produces a board of quality, flexibility and strength from recycled materials, making it a totally sustainable product that is ideal for walls, ceilings and floors.

The Fermacell building board is manufactured in an extraordinary way using ordinary materials. A Gypsum, taken from the waste product of a power station in the Netherlands, and cellulose fibres from recycled paper and magazines collected throughout the Netherlands, are mixed with water to produce homogenous sheet materials that are cured and cut to size.

All by-products are fed back into the production cycle and Fermacell have even instigated a scheme for the collection and recycling of offcuts and waste created on construction sites, giving customers the opportunity to enhance their environmental reputations by demonstrating social responsibility through reduced demand for land fill.



The logo for fermacell, featuring the word "fermacell" in a white, lowercase, sans-serif font with a registered trademark symbol (®) to the upper right. The text is centered within a solid orange square.

Because it's better

Fermacell Dry Lining Systems

Unit 2, The Courtyard
Reddicap Trading Estate
Sutton Coldfield
West Midlands, B75 7BU
Telephone: 0870 6090306
Fax: 0870 2402948

www.fermacell.co.uk
Fermacell-uk@xella.com

Fermacell® is a registered trademark of XELLA International GmbH.

Please call the helpline to ensure that you are in possession of the latest information.
For additional information please visit the Fermacell website.